



ABOVE: One side of this shopping center was done in concrete, the other in asphalt. Even with more installed lighting on the asphalt side, it is far darker than the concrete side.

Lighting

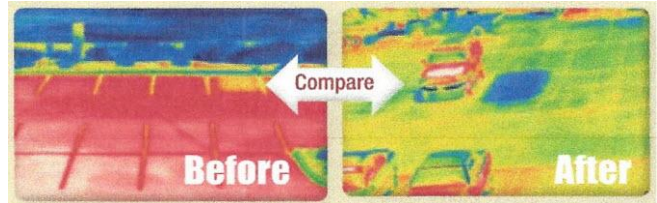
In addition to the initial cost savings mentioned on the left page, concrete's reflective surface decreases lighting energy up to 30%-a savings the owner can keep for the life of the project.

Less Maintenance

Increased strength and durability means less maintenance, as concrete parking lots can last decades longer.

Air Conditioning

The cooler, more reflective pavement decreases ambient temperatures by about 7 to 10 degrees, which slashes peak loads during those hot summer days.



ABOVE: This parking lot was given a concrete overlay of the old asphalt which considerably cooled the parking lot.

